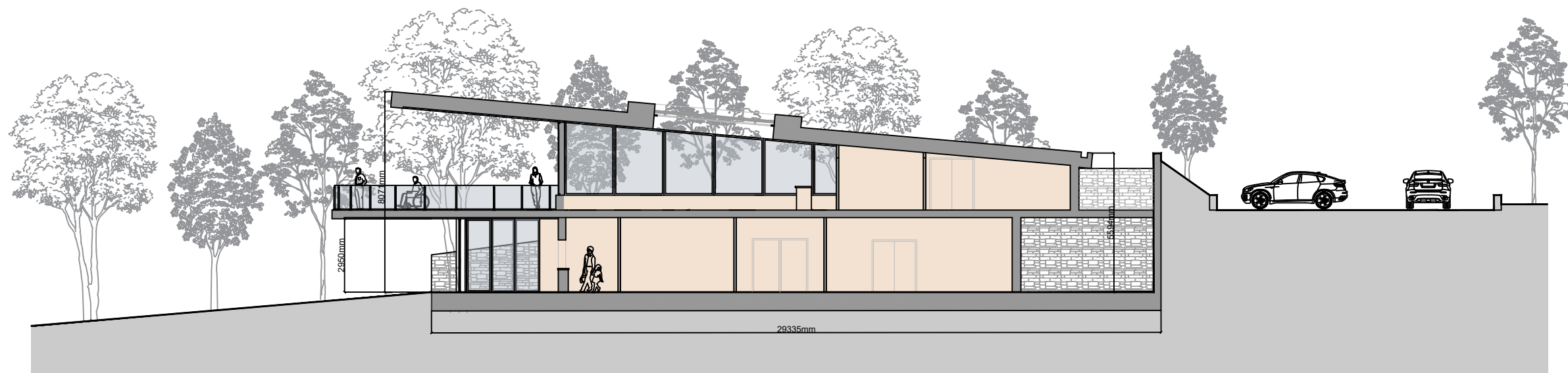
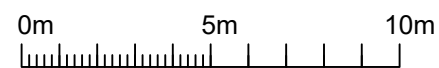


© COPYRIGHT MANNING ELLIOTT PARTNERSHIP 2021.
 THIS DRAWING IS THE PROPERTY OF MANNING ELLIOTT PARTNERSHIP.
 IT MUST NOT BE COPIED OR REPRODUCED OR DIVULGED
 TO ANYONE WITHOUT PERMISSION.
 DO NOT SCALE OFF THIS DRAWING. ANY DISCREPANCIES TO BE
 REPORTED TO MANNING ELLIOTT PARTNERSHIP.

REVISIONS:
 Revision A 10.08.2021



Section A-A as Proposed



MANNINGELLIOTT
 PARTNERSHIP

Chartered Architects & Designers
 Manelli House, Suite 1
 Cowper Road, Penrith
 Cumbria CA11 9BN
 t: 01768 868 800
 e: post@manning-elliott.co.uk
 w: manning-elliott.co.uk

project title:
Luge Track & Operations Facility
 Blaze Fell Woodland
 Armathwaite, CA4 9TN

drawing title:
Section A-A
 as Proposed

issue stage:
 Planning

date: Aug 2021 drawn: CS/LS scale @ A3: 1:200

drawing number:	revision:
2004-PL401	A