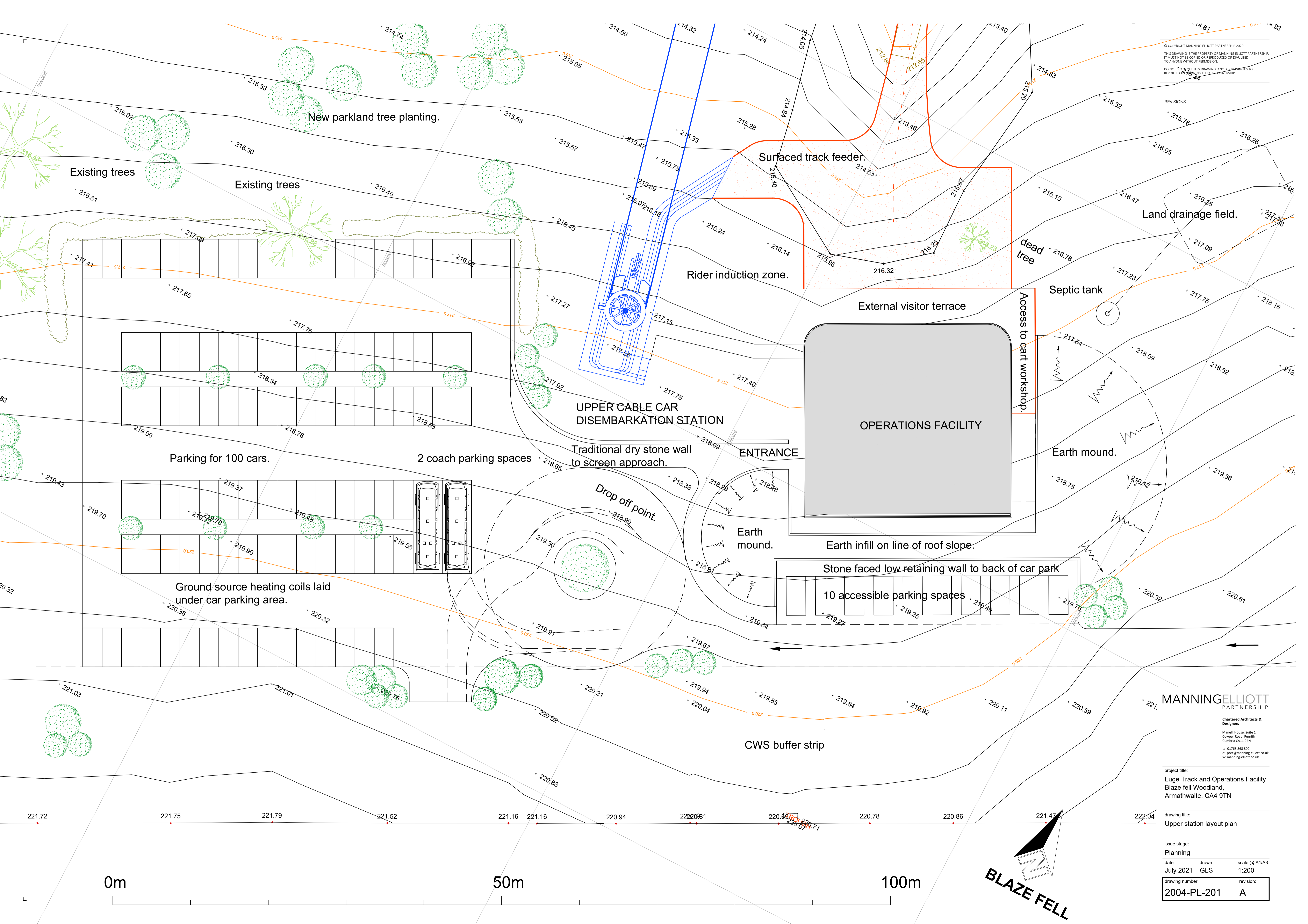


© COPYRIGHT MANNING ELLIOTT PARTNERSHIP 2020.
 THIS DRAWING IS THE PROPERTY OF MANNING ELLIOTT PARTNERSHIP.
 IT MUST NOT BE COPIED OR REPRODUCED OR DIVULGED
 TO ANYONE WITHOUT PERMISSION.
 DO NOT USE THIS DRAWING, ANY DISCREPANCIES TO BE
 REPORTED TO MANNING ELLIOTT PARTNERSHIP.

REVISIONS

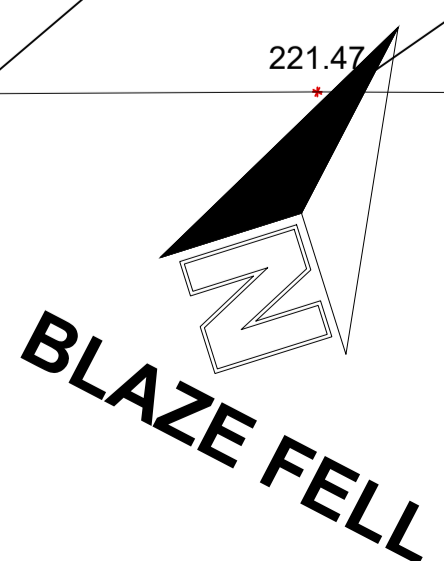


MANNING ELLIOTT
 PARTNERSHIP
 Chartered Architects &
 Designers
 Manelli House, Suite 1
 Cowper Road, Henrich
 Combe CA11 9RN
 t: 01768 868 800
 e: post@manning-elliott.co.uk
 w: manning-elliott.co.uk

project title:
 Luge Track and Operations Facility
 Blaze fell Woodland,
 Armathwaite, CA4 9TN

drawing title:
 Upper station layout plan

issue stage:
 Planning
 date: July 2021
 drawing number: 2004-PL-201
 drawn: GLS
 scale @ A1/A3: 1:200
 revision: A



0m 50m 100m